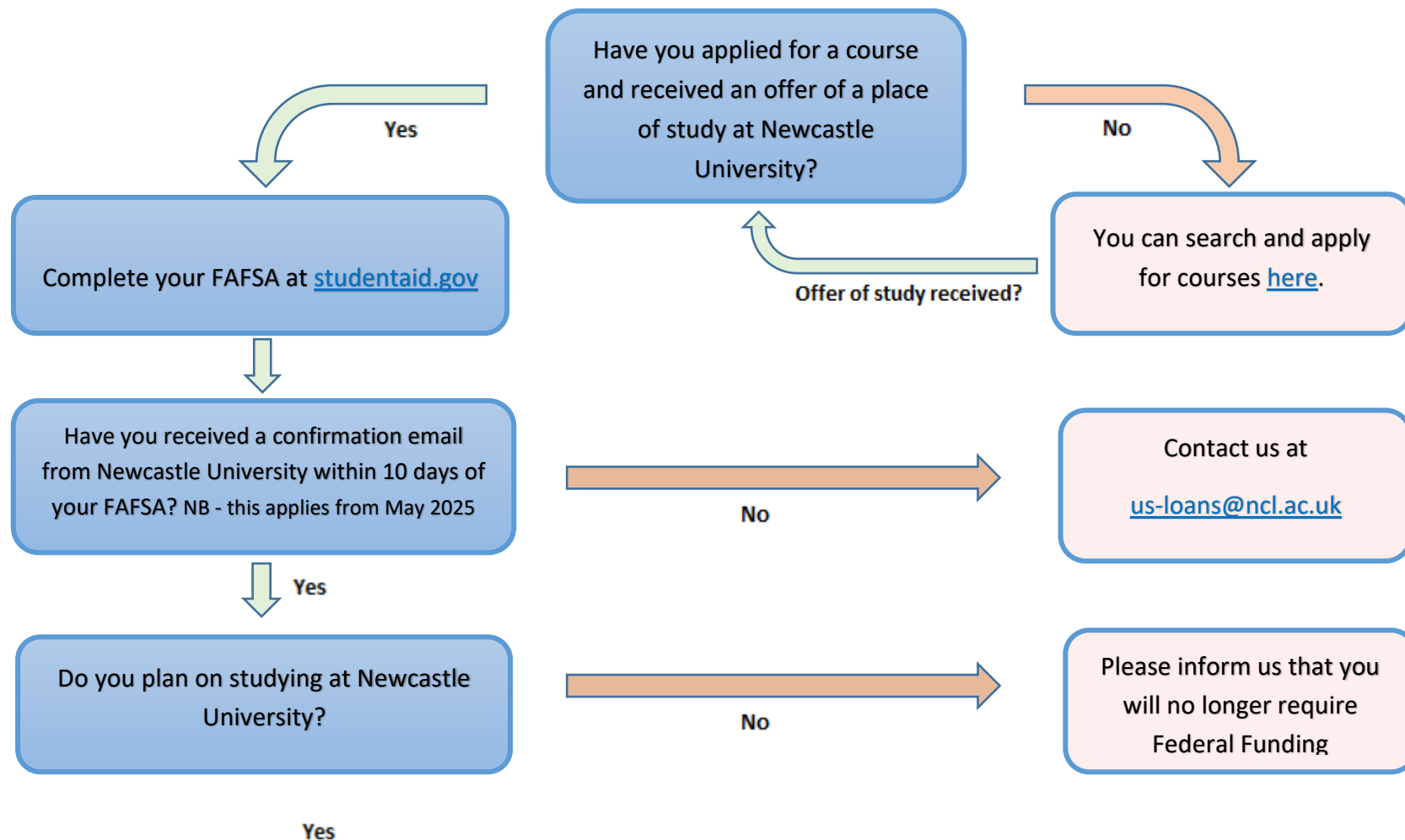


US Federal Loans Postgraduate Flowchart





If you require Federal Funding to support your studies – then you require a Cost of Attendance calculation. Please request this by emailing us-loans@ncl.ac.uk. You will then be sent a Cost of Attendance email.



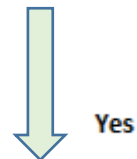
Thoroughly read your Cost of Attendance email.



Have you completed the Entrance Counselling?



Have you completed the Unsubsidised Master Promissory Note?



Our website includes comprehensive information regarding US Federal Funding, including an FAQ page. This can be found [here](#).



Do you require a PLUS loan?

No

Yes



Have you completed the PLUS Master Promissory Note?

Yes



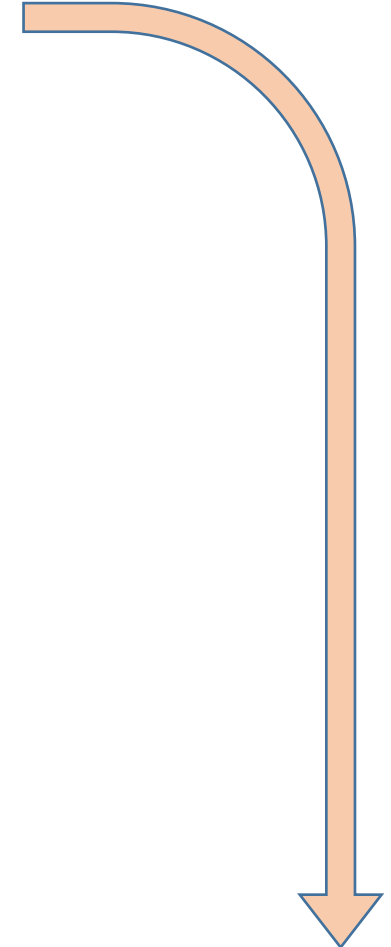
Have you completed the credit check?

Yes

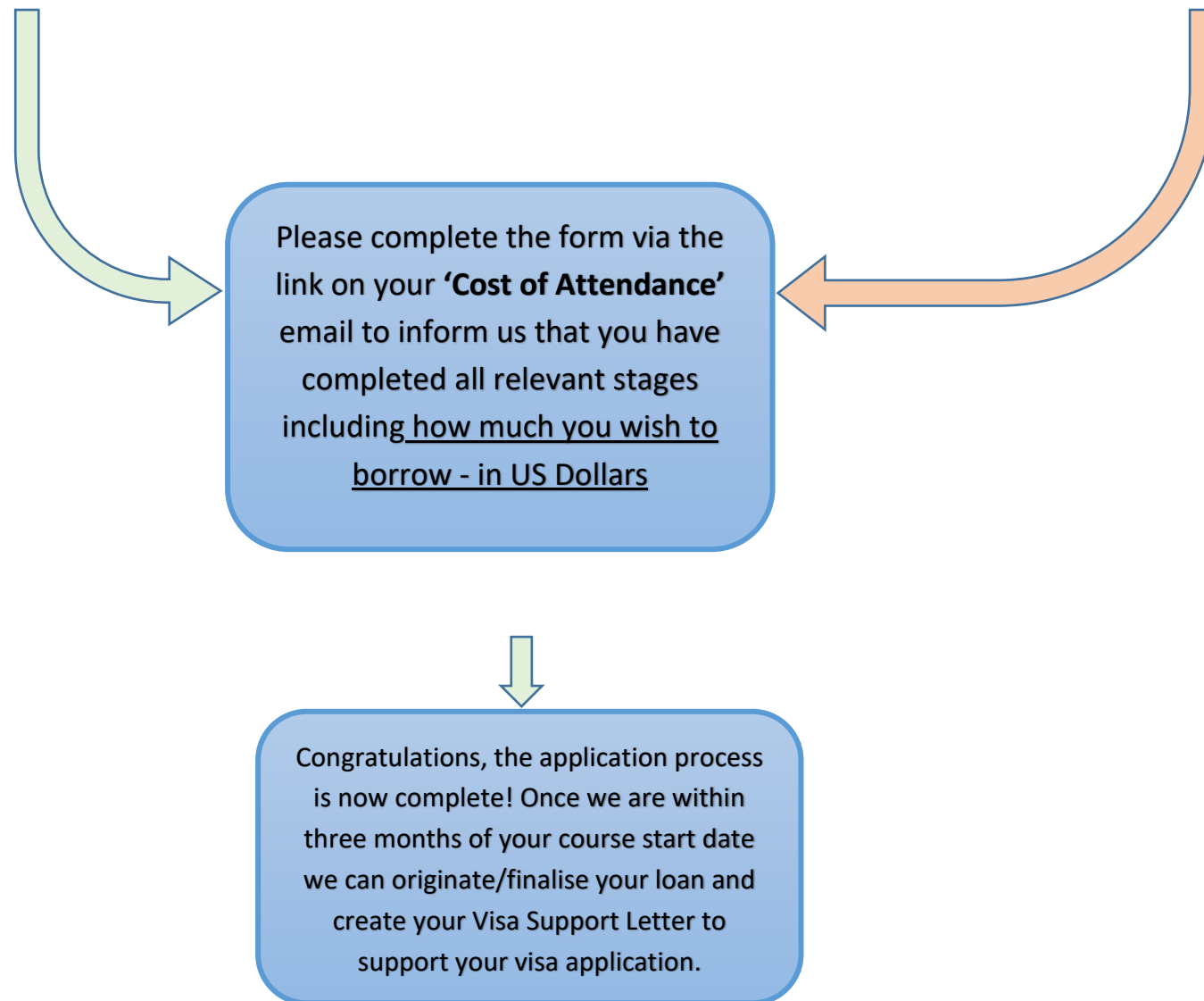


Was the credit check successful?

Yes



Our website includes comprehensive information regarding US Federal Funding, including an FAQ page. This can be found [here](#).



Our website includes comprehensive information regarding US Federal Funding, including an FAQ page. This can be found [here](#).